

# IMPROVING AIR QUALITY IN LOGISTICS

---

Fiona Coull, CRP Senior Programme  
Manager





# About Cross River Partnership

Cross River Partnership (CRP) is a partnership delivering impactful environmental, economic and community focused projects. We support public, private and community organisations with expert guidance, collaboration and innovation. We believe in a fair and equitable transition towards good and green growth in London.





# The Challenge

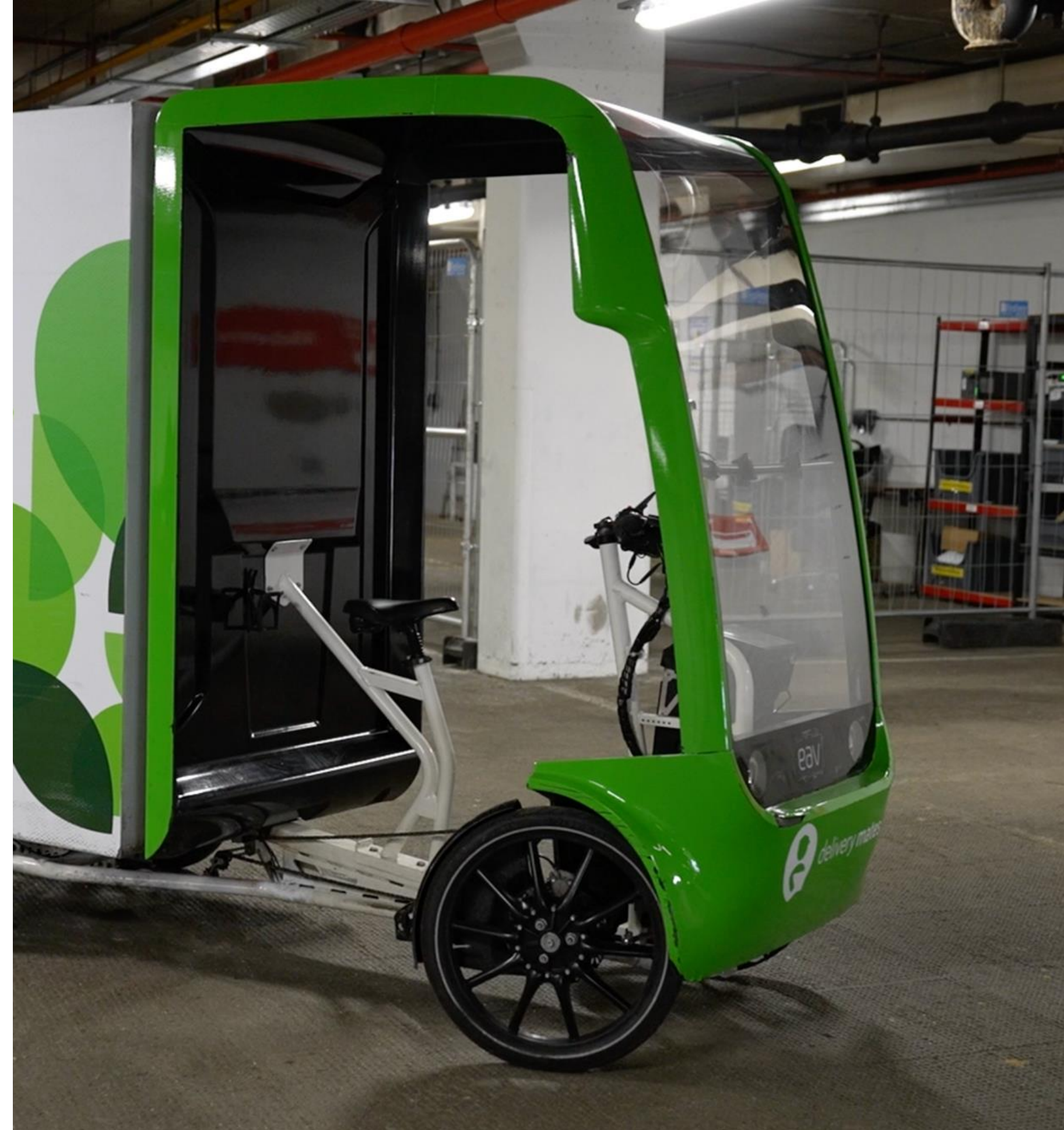
- In 2020, 450 million parcels were delivered in London, 80% of these were delivered by road.
- Parcel numbers are likely to double by 2030.
- Exacerbating current issues with pollution and congestion.
- Encouraging sustainable freight through low emissions last mile logistics and the use of alternative modes can help to address these problems.





# Supporting Sustainable Freight at CRP

- Urban & Last Mile Logistics:
  - Delivering Micro Logistics Hubs
  - Supporting cargo bike deliveries
  - Supporting fleet electrification
  - Trialling Digital Kerbside Management Solutions
  - The London Light Freight Walking Trial
- The Middle Mile & Alternative Modes:
  - Encouraging River and Rail Freight
  - The London Light Freight River Trial
  - CRP's River Freight Pilot (Parts 1 and 2)
  - Supporting the development of rail freight at Waterloo Station





# Developing Urban Logistics Hubs



- Having delivered several urban logistics hubs as part of CRP's programmes, CRP is now supporting partners to develop urban logistics hubs across London.
- Hubs CRP have successfully delivered include:
  - [The Pimlico Micro Logistics Hub](#)
  - [The Wandsworth Micro Logistics Hub](#)
  - [The Brixton Micro Logistics Hub](#)
- We also have developed several resources to improve understanding of urban logistics practices between the public and private sector.
- This includes studies on 'The Potential for Urban Logistics Hubs in Central London', guides on how to set up an urban logistics hub, reports on CRP's learnings and CRP's [Urban Logistics Hub Map](#) that aims to provide information on the various logistics hubs around London.





# The Pimlico Micro Logistics Hub

- Pimlico micro logistics hub trial launched on 17th April 2023 to support low-emission last-mile deliveries in the City of Westminster.
- The hub, which replaces 6 car parking spaces, receives goods from an EV before they are sorted and then distributed by electric cargo bikes in Westminster and the surrounding area.
- A total of 111,236 deliveries were sent via the hub throughout the entire 9-month period and the e-cargo bikes travelled a combined total of 22,578 km (14,029 miles), which is more than halfway around the Earth.
- The trial resulted in reductions of 4,186 kg of CO<sub>2</sub>, 15,141 g of NO<sub>x</sub>, and 303 g of PM<sub>2.5</sub> when comparing the e-cargo bikes to normal van deliveries on the last mile.
- After a successful trial period, Delivery Mates and Q-Park have come to an agreement and will continue to independently operate from the hub for a min. of 12 months.
- In-depth report on the trial has been published by CRP.

# Supporting the Switch to Cargo Bikes

- CRP have worked on several cargo bike schemes as part of our various projects A few examples include:

The Wimbledon cargo bike scheme enabled local businesses to use a cargo bike courier for their deliveries for free!

There were 129 successful deliveries and 40kg of CO2 saved!

CRP helped Streatham BID to procure a cargo bike for their businesses to use for free.

The scheme helped save 90kg of CO2 and 173g of NOx. over a year.

CRP has supported our partners to implement the 'Our Bike' scheme in their areas.

This is a shared cargo bike that can be used by businesses, communities and residents.



# CRP's Digital Kerbside Management Trial

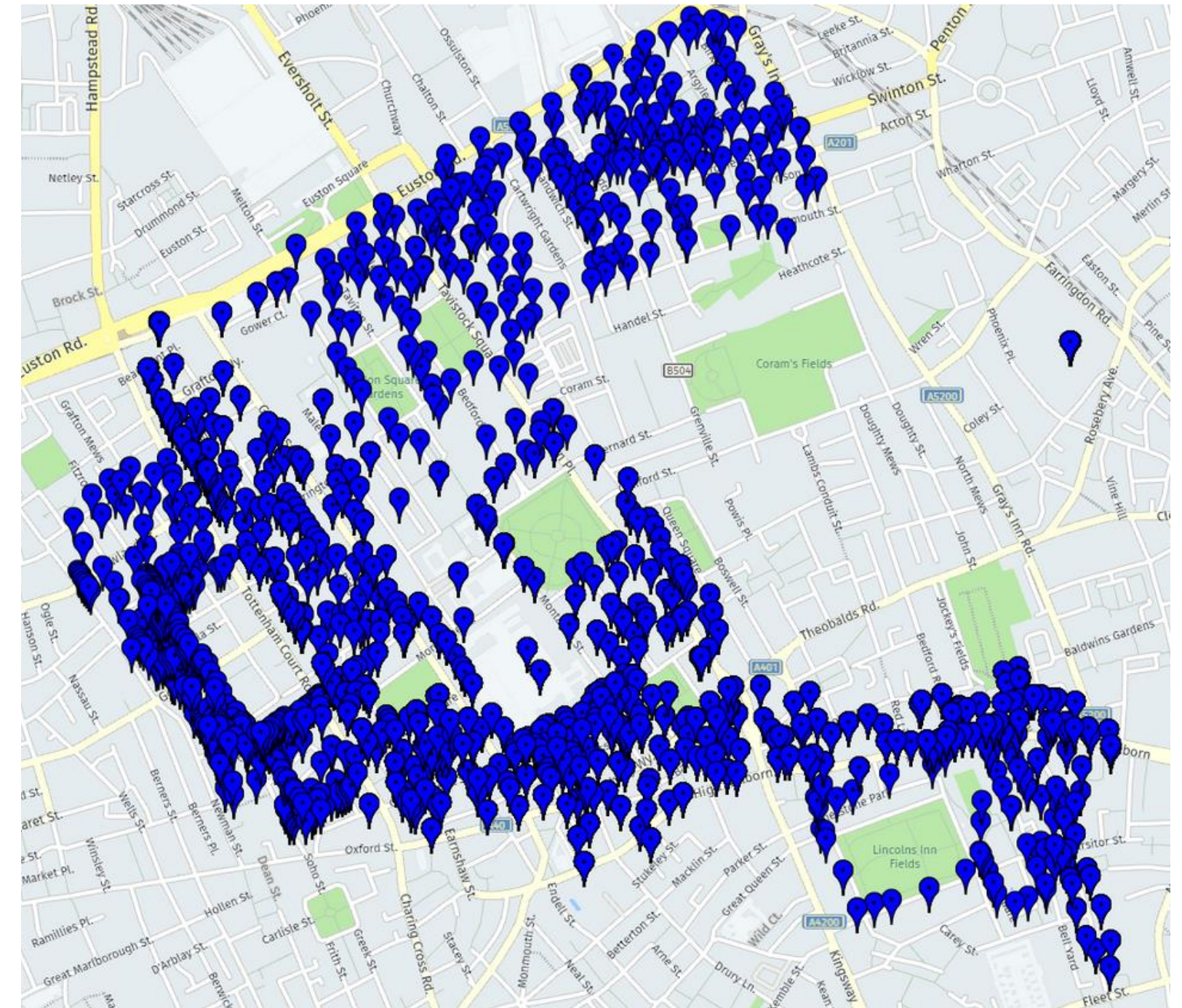
- Delivering a Digital Kerbside Management trial in collaboration with [Grid Smarter Cities](#). This will enable participating local authorities to trial the use of [Kerb-Virtual Loading bays](#) in 2 suitable locations for a roughly 6-month period.
- Currently working with City of London, LB Camden, LB Lambeth, LB Richmond and Transport for London as part of the trial.
- 7 virtual loading bays are now live across partner locations.
- Focus now is largely on monitoring and data collection to understand impacts.
- CRP will share report on the trial detailing learnings and impacts to support others with digital kerbside management technology implementation and operations.





# The London Light Freight Walking Trial

- The London Light Freight Walking Trial involved an E-Walker that was used by UPS to deliver parcels and packages to businesses in the Fitzrovia area.
- The trial began in May 2023 and finished in March 2024
- Across the 8 months, 12,135 parcels were delivered by E-Walker and there were approximately 47 stops per day
- Postcode data shows a clear concentration of deliveries in the West and South areas of Fitzrovia, particularly along Tottenham Court Road and the A40.
- Data from the trial is indicating emissions reductions of ~46g of PM2.5 and ~91g of PM10.
- An in-depth report on the trial will be published by CRP shortly.





# Enabling River Freight



- CRP has been working with partners to provide the proof of concept for river freight into central London. CRP's [Clean Air Logistics for London](#) (CALL) project aimed to move more freight into London via river. As part of this, CRP co-ordinated three successful river freight trials:
  - [The London Light Freight River Trial](#)
  - [CRP's River Freight Pilot](#)
  - [CRP's River Freight Pilot Part Two - Scaling Up: Monthly bulk deliveries on the Thames](#)
- Emissions savings of 92% for NOx, 96% for CO2, 79% for PM10 and 78% for PM2.5 for the London Light Freight River Trial.
- Additionally 3 vans were removed from London's roads per delivery trip, offloading goods for last-mile operators averaged 7 minutes, and Speedy Services saved over 80 minutes of driving time each way by using the river.



# River Freight Tools & Studies

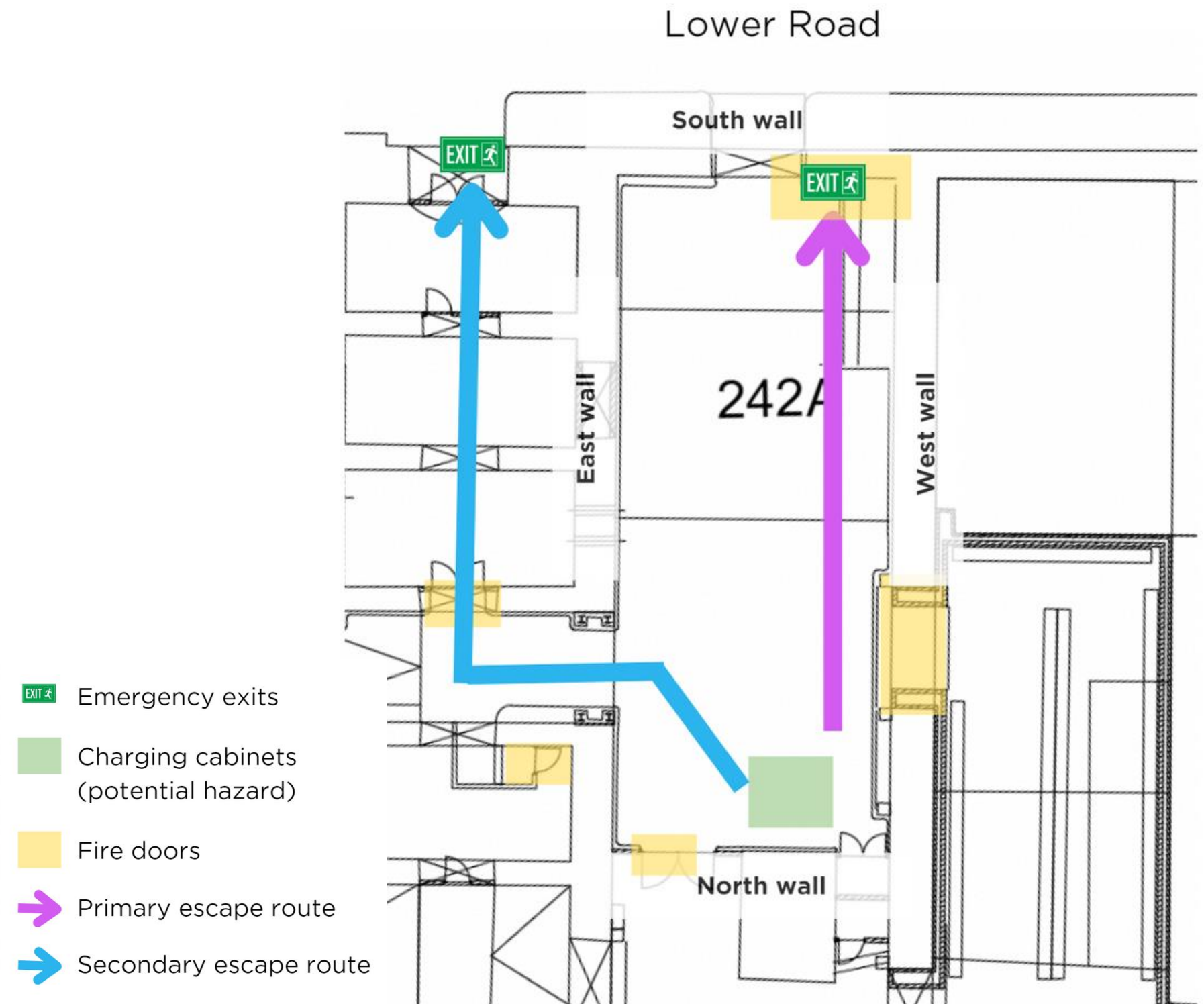
- CRP have developed several tools & studies to support operators to use the river for freight.
- CRP also supporting the Port of London Authority to encourage more use of the river for freight





# Trialling Rail Freight at Waterloo Station

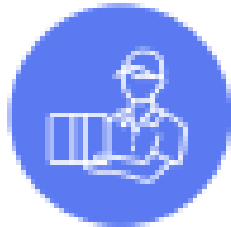
- CRP have been working with partners to unlock the logistics potential of a large, underutilised space beneath Waterloo Station.
- This involves supporting a 6-month micro logistics hub for a freight operator in the undercroft of Waterloo Station.
- CRP received approvals from Department for Transport Tier 3 Board on 17th May.
- Inbound deliveries to the hub will initially be by road freight, with outbound deliveries for the last mile by cargo bike.
- This will help to develop key learnings around how the space functions and will inform future rail-fed freight programmes.





# Opportunities for Rail Freight

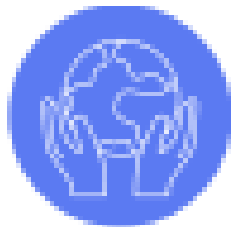
- In the long term, a long-distance dedicated freight train into the Waterloo Freight Hub could:
- CRP have also undertaken several studies on the potential & impacts of rail freight.



Create 165 new, local, “green jobs”



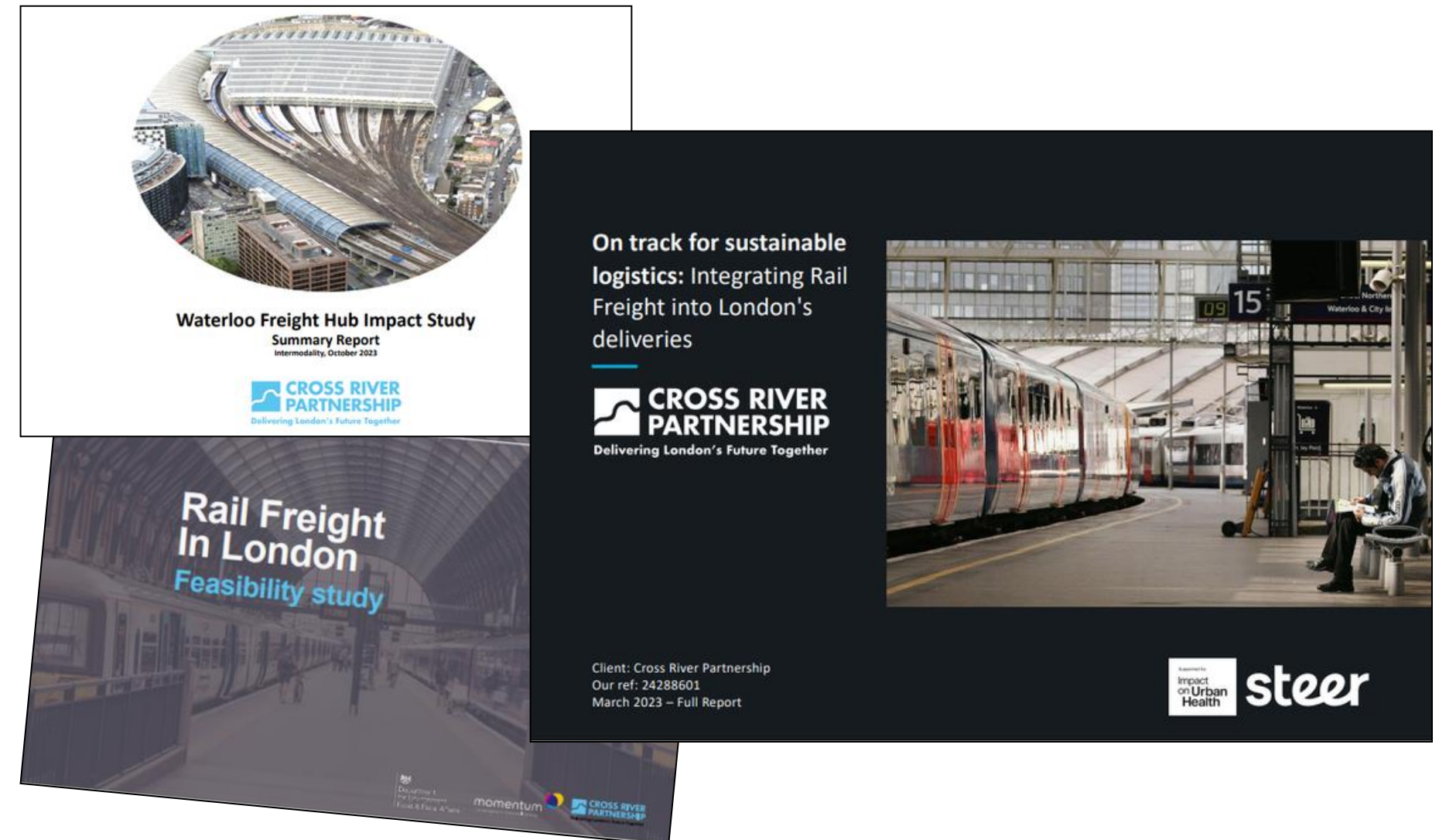
£44 million in turnover for local businesses per annum



£1.4 million in environmental, social and economic benefits from using rail freight per annum



Nearly 2,500 tonnes of carbon dioxide saved from London's air per annum





# CRP Consultancy Services

CRP has expertise in delivering a wide range of projects. This includes those relating to sustainable freight, engagement and behaviour change, placemaking, greening, communications support, and monitoring and data analysis.

We offer bespoke support where we apply our expertise, skills, and tools to deliver solutions that will support you to meet your goals and objectives.

Decarbonisation & Sustainability	Place-making & Greening	Strategy Planning	Monitoring & Data analysis	Partnership & Stakeholder Engagement
<ul style="list-style-type: none"><li>• Sustainable Freight</li><li>• Sustainability Strategies</li><li>• Freight &amp; Servicing Plans</li><li>• Urban Logistics</li><li>• Freight Operation Advice</li></ul>	<ul style="list-style-type: none"><li>• Place-making Strategies</li><li>• Urban Greening</li><li>• Supporting Active Travel</li><li>• Planning &amp; Property</li><li>• Art &amp; Heritage</li></ul>	<ul style="list-style-type: none"><li>• Communication Campaigns</li><li>• Social Media Assets</li><li>• Communication Strategies</li><li>• Event Planning</li><li>• Knowledge Sharing</li></ul>	<ul style="list-style-type: none"><li>• Air Quality Mapping</li><li>• Vehicle Type Counts</li><li>• Analysis &amp; reporting</li><li>• Bespoke monitoring</li><li>• Active travel evaluation</li><li>• Qualitative surveys &amp; analysis</li></ul>	<ul style="list-style-type: none"><li>• Apolitical collaboration</li><li>• Programme Management</li><li>• London-wide contacts and network</li><li>• Cross-sector engagement</li><li>• Cocreation</li><li>• Behaviour change</li></ul>



# Get in Touch

**Fiona Coull**

**Senior Programme Manager**

**fionacoull@crossriverpartnership.org**



**[www.crossriverpartnership.org/newsletter](http://www.crossriverpartnership.org/newsletter)**



**[crp@crossriverpartnership.org](mailto:crp@crossriverpartnership.org)**



**07966 201 695**



**@CrossRiverPship**



**Cross River Partnership**



**Cross River Partnership**



**CRP YouTube Channel**